

[WWW.BATONLOCKUSA.COM](http://WWW.BATONLOCKUSA.COM)

**OPERATOR**



# baton



**Maxi-Security™ Dimple Key Tubular Key Conventional**



# baton®

**1-800-395-8880**



**Your to Security**

**Celebrating Over 50 Years  
of Unmatched Security  
and Service Worldwide!**

**14275 Commerce Dr Garden Grove CA 92843 [info@batonlockusa.com](mailto:info@batonlockusa.com)**

# Maxi-Security



Semi-Restricted,  
Restricted and  
Reversible Keys

## Detainer DiscSystem



P.05 P.05 P.05 P.05 P.06 P.06



7G Series U-Change U-Change +



## Tubular System



P.09~12 P.09~12 P.09/11 P.09/11 P.12/13

Single / Double Row



## Dimple Key System



P.17 P.17 P.17 P.17 P.17



## Flat Key System



P.22 P.22 P.22 P.22 P.22 P.22



## Combination / Special Key



P.20 P.20 P.20 P.20 P.20



## Accessories



P.29 P.08 P.27 P.12/29 P.27 P.26



P.07



P.06



P.06



P.07



P.07



P.07



P.13



P.15



P.10/11/14



P.10/11/14



P.10/11/14/28



P.14/28



P.15



P.18



P.18



P.18



P.18



P.28



P.24



P.19



P.19



P.24



P.24



P.23



P.23



P.23/28



P.24



P.20



P.21



P.21



P.21



P.21



P.21



P.21



P.21



P.25



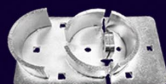
P.25



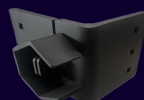
P.25



P.26



P.26



P.26/28



P.26



## 6000 Series

**baton®**  
800-395-8880



6000-S1



6000-R1



6000-D3



6000-LD3



6000-D-Color



6000-R-DK  
+731-Red



731-Color



6089 +  
731-White



7885 +  
731-Orange

### Maxi-Security Detainer Disc System Key Profiles

ONE KEY  
FITS ALL

- Baton's 6000 Series are available with a number of key profiles which provide different levels of security.
- There are three types of keyways available:
- Commercial Keyways - S1, S2, S4, S5. These standard key profiles are supplied at a locksmith level.
- Restricted Keyways - S6, S7, R Series, D Series. These special key profiles are available when special key security is required. Key duplication can be obtained by special order from our factory or authorized service centers only. D Series keys are made of longer lasting steel instead of nickel-silver, and they are reversible.
- Reserved Keyways - There are some key profiles that have been reserved for unique applications. Quantity orders may apply.
- Unless otherwise specified, all 6000 Series locks are assembled with standard cuts. Locks can be keyed alike, keyed different, or master keyed. For special key security, millimeter (MM) cuts are available.



## 6080/6044: Maxi-Security Cam Locks / Plug Locks

- Triple plated hardened steel (6044,85) or brass (6086, 87, 89) body.
- NAMA Standard dimensions.
- Key removable only in the locked position.
- Available keyed alike, keyed different, or master keyed. Please see page 30 for more information
- Factory rekeyable.
- 6080 Camlocks: The M7x1.0 double D tail piece will accommodate any cams or accessories that meet NAMA standards.
- Supplied with a **Right turn Clockwise 90° governor**, 180° governors available
- Left turn counter-clockwise option available (special factory setup and key required).
- **Hardenen** steel anti drill disc option for additional charge. (only available with select R and D keyway).
- 6044 Pluglocks: Fits all standard T or L handles. with Spring loaded hardened steel latch.
- Dead Locking latch option available.



6044



6085



6086



6522

## 6522 Maxi-Security Master Storage lock

- Design to work with 681 storage system.
- 90 degree turn with special cam included
- Available keyed alike, keyed different, or master keyed.
- Factory rekeyable.

## 6077 Maxi-Security Push Camlock

- Push to lock with 6mm dia x 10mm studs in lock state.
- Available keyed alike, keyed different, or master keyed.
- Factory rekeyable.



6077

## 6147 Maxi-Security Push Mount Locks

- Push to lock with 6mm dia x 10mm studs in lock state.
- Available keyed alike, keyed different, or master keyed.
- Factory rekeyable.



6147

## 6000 Series

**baton®**  
800-395-8880



6020-31

6020-30

6020-56-SG

6020-56



6020-55



6200-80

### 6020 Series: Maxi-Security Brass Padlocks

- Chrome plated solid brass body.
- Hardened steel shackle.
- Double ball bearing locking mechanism.
- Key removable only in the locked position.
- Available keyed alike, keyed different, or master keyed.
- All locks with exception of 30mm are factory rekeyable.
- Some sizes are available with a long shackle.
- **Available with an extended 2" or 4" shackle!**  
**Please inquire when ordering.**

### 6120 Series: Maxi-Security Brass Pin Locks

- Chrome plated solid brass body.
- Hardened steel locking bolt, with 3/4" mushroom head.
- Bolt diameter: 11mm. Bolt clearance: 16mm.
- Key removable in the locked position only.

### 6220 Series: Maxi-Security Armored Padlocks

- Chrome plated solid brass body with a hardened steel jacket
- Case hardened steel shackle.
- Shackle diameter: 11mm. Shackle clearance: 28mm.
- Double ball bearing locking mechanism
- Key removable in the locked position only.

### 6200/6210: Maxi-Security Armored Block Locks

- Chrome plated solid brass body with a hardened steel (6200) or stainless steel (6210) jacket.
- Hardened steel locking bolt features a snap off head to prevent dent pulling. Bolt diameter: 11mm.
- 6200 Clearance: 18x36mm. 6210 Clearance: 14x22mm.
- Key removable in the locked position only.



6210-45



6220-60

## 6740 Series: Maxi-Security Space Locks

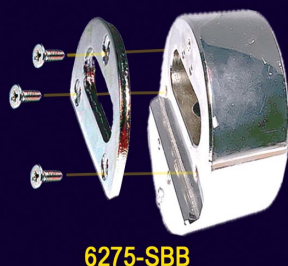
- Laser welded stainless steel case and interior construction
- Triple plated case hardened steel shackle.
- Double ball bearing locking mechanism.
- Key removable in the locked position only.
- Available keyed alike or keyed different.
- Factory / Field rekeyable.



Field exchangeable cylinder is held in place with a hardened steel set screw which can be removed only when it is unlocked with the original key.

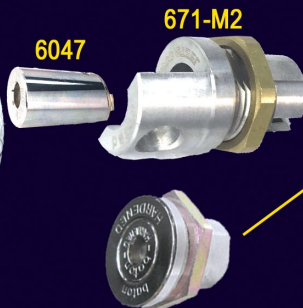
## 6273/ 6275 Series: Maxi-Security Shackless Hardened Steel Padlock (Pucklock)

- Body is constructed from solid hardened steel.
- Specialized shackless design provides tough bolt cutter and hacksaw resistance.
- Available in Standard (38mm) and Tall (58mm)
- Optional patented Bump provides enhance drill / hacksaw resistance.
- 6275 series offer exclusive plate allowing operator to choose flat or step function in field.
- Add-on accessories include optional 778 HASPs and 671-HS Slip ring guard. **See page 28 on how to order**



6273-SBF

671-HS



6047

671-M2

671-B-S + 6047

Our new design offsets unwanted entry and drilling for maximum protection!





# 7000 Keys



7G Series



U-Change



U-Change+



**baton®**  
800-395-8880

## Tubular Key System Key Profiles



7000-T1

7000-T2

- Baton's 7000 Series is available with a number of key profiles which provide different levels of security.
- One key fits all offered within each series
- Master key with up to level 4 system available
- Special key profiles keyway and series are available for restricted levels of security. We can also custom for unique key positions and extra pin or bridge other's systems. Quantity order may apply.



7000-GF

7000-TG

## Key Pull Positions

Our 7000 series locks are available with extra key pull positions with an additional service charge per lock. Additional key pull positions would enable key removal from any position desired for extra convenience.



7800-SET

## Offsets & Extra Pins

Our 7000 series locks are available with offsets and extra pins as well. Offsets are available for the 7 pin lock. These features will be with an additional service charge per lock. Please specify if you would like these features.



8800-SET



7000-PS-Color



7000-PL-Color



Color / pattern matching for easy access

731-Color

## 7G SERIES Patented High Security

Problems with break-ins? Fighting both picking tools and the price of high security?

Our 7G series lock features a patented lock with LUGS combined with specialty keys, making unauthorized key duplication difficult and picking nearly impossible. With its hardened steel anti-drill design, you can rest easy knowing your investment is safe from forced entry.

- The 7G & 7G 4-Way U-Change high security camlocks have been constructed with LUGS on the entrance to the lock. This prevents the use of common picking tools as the pick can not enter the lock.
- The keys for the 7G camlock are cut with 2 grooves to bypass the LUGS, offering up to 600,000 unique key combinations.
- Triple plated alloy housing.
- NAMA standard 3/4" diameter with 2 flats.
- Standard single-pull camlocks have a 90° rotation with keys removable in the locked position only.
- The M7 x 1.0 double 'D' tail piece will accommodate any cams or accessories that meets NAMA standards.
- Available keyed alike or keyed different.
- Factory rekeyable.
- **Hardened steel with anti-drill pin**
- **Low Cost**
- **No picking tool**
- **Special key design**
- **No duplication**
- **Reduce key breakage**



**7G85**



**7G87**



**7G44**



**7G77**



**7G47**



**7G00-TG2**

# 8800 Series



**baton®**  
800-395-8880

## 8800 Series: U-CHANGE PLUS Field-Rekeyable Locks



8844-10



8885-10



8860-45



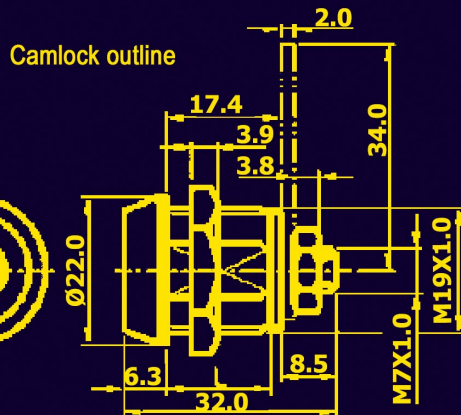
8840-70



8800-SET

- Driverless design and unique keyway allows for maximum protection against lock picking.
- Features Baton's patented U-CHANGE PLUS 12-pin tubular key system.
- Quickly rekey the lock to any of the 12 combinations using a change key without removing and reassembling the lock.
- 8844 Pluglocks: Meets NAMA standards. Same construction as our 7044 series.
- 8880 Camlocks: Meets NAMA standards. Barrel and housing is constructed of chrome plated hardened steel instead of brass.
- 8860 Padlocks: Same construction as our 7760 series.
- 8860 Space locks: Same construction as our 7740 series.

We bridge other companys changeable locks and provides compatiable locks and keys. Please call for detail





## 7800 Series: U-CHANGE Field-Rekeyable Locks

- Features Baton's patented U-CHANGE 8-pin tubular key system. One key set fits all
- Quickly rekey the lock to any of the 8 combinations using a change key without removing and reassembling the lock.
- 7844 Pluglocks: Meets NAMA standards.
- 7880 Camlocks: Meets NAMA standards. Barrel and housing is constructed of chrome plated hardened steel instead of brass.
- 7860-45/55 Padlocks: Same construction as our 7760.
- 7840 Space locks: Same construction as our 7740.



7844-10



7885-10

7860-45 / 55



7860-16

## 7877 U-CHANGE Push Camlock

- Push to lock with 6mm dia x 10mm studs in lock state.
- Factory rekeyable.

## 7809 U-CHANGE Push Mount Locks

- Push to lock with 6mm dia x 10mm studs in lock state.
- Factory rekeyable.



7840-70

We bridge other companies changeable locks and provides compatible locks and keys. Please call for detail



7877-22



7847-25



7800-SET

## 7000 / 8000 Series

**baton®**  
800-395-8880



7044

### 7044 series : 7 pin Tubular Key PlugLocks

- Triple plated hardened steel
- Fits all standard T or L handles.
- Spring loaded hardened steel latch.
- NAMA Standard dimensions.
- Anti-Drill Pin option available.



7084 / 85 / 87 / 89 / 90

### 7080 series : 7 pin Tubular Key Cam Locks

- NAMA Standard dimensions Chrome plated brass body.
- Size Available in  
7084 13mm (7/16")  
7085 16mm (5/8") 7087 22mm (7/8")  
7089 28mm (1-1/8") 7090 38mm (1-1/2")
- Key removable only in the locked position.
- Available keyed alike, keyed different, or master keyed.
- Anti-Drill Pin option available.
- Factory rekeyable.



8044

### 8080 Series: High Security 10 Pin Tubular Key Tough series Cam Locks

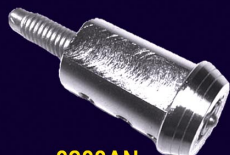
- 10 Pin construction with provide millions of combinations.
- Sizes Available in NAMA Standard  
8085 16mm (5/8") 8087 22mm (7/8") 8089 28mm (1-1/8")
- Key removable only in the locked position.
- Available keyed alike, keyed different, or master keyed.
- Factory rekeyable.



8085 / 87 / 89

### 8288 Series: High Security 10 Pin Tubular Key Threaded-Style Cover Screw Locks

- designed with anti-drill pin and stainless steel pins.
- Triple plated harden housing.
- 360° free rotation with dual key pulls for easy operation.
- Available Master Keyed, keyed alike or keyed different.
- Various stud lengths (200/241/385/486/Custom) available.



8288AN



TSS



T

690-extension  
see P.29





## 7300 Series: Tubular Key Bulk Vending Screw Locks

- Patented one-piece alloy construction.
- Unique restricted 7-pin tumbler tubular key system.
- Key cuts are located on the inside of the key to prevent duplication and picking.
- Offers tens of thousands of unique key combinations.
- Available keyed alike or keyed different.



## 73F2/3 Series: Flat Key Bulk Vending Screw Locks

- Designed for "North western" style bulk vending machines.
- Accepts 1/4" (73F2) / 5/16 (73F2) diameter threaded posts.
- one-piece Zinc alloy construction.
- 360° free rotation with dual key pulls for easy operation.
- Available keyed alike or keyed different.



## 7085 Series: Tubular Key Screw Locks

- Designed for "beaver" style bulk vending machines.
- Steel coupler accepts 1/4" diameter threaded posts.
- Steel Threaded stud is 5/16" W18 with various size
- Triple plated alloy housing. NAMA standard dimensions.
- 360° free rotation with dual key pulls for easy operation. (4 pulls option available).
- Available keyed alike / keyed different / master key



## 8288 Series: High Security 10 Pin Tubular Key Threaded-Style Cover Screw Locks

- Designed with anti-drill pin and stainless steel pins.
- Triple plated harden housing for toughest environment.
- 360° free rotation with dual key pulls for easy operation.
- Available Mater Keyed, keyed alike or keyed different.
- Various stud lengths (200/241/385/486/Custom) available.





## 7000 Series

**baton®**  
800-395-8880



7760-45 / 7760-55



7760-16



7740-18

7740-70



7273-59



778H-290

### 7760 Series: Tubular Key Brass Padlocks

- Chrome plated solid brass body.
- Triple plated case hardened steel shackle.
- Double latched automatic re-locking mechanism.
- Available keyed alike or keyed different.
- Replacement cylinders for field-replacement.

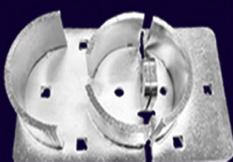
### 7740 Series: Tubular Key Space Locks

- Laser-welded stainless steel case and interior construction
- Triple plated case hardened steel shackle.
- Double ball bearing locking mechanism.
- Key removable only in the locked position.
- Available keyed alike or keyed different.
- Factory rekeyable.
- Replacement cylinders are available for field replacement.

### 7273: Tubular Shackleless Hardened pucklock

- Body is constructed from solid hardened steel.
- Specialized shackleless design provides tough bolt cutter and hacksaw resistance.
- Available keyed alike or keyed different.
- Available in standard 43mm / thick style 63 mm
- Add-on accessories include special 778 HASPs with optional anti-drill guard. Please See page 28.

### 778H: Heavy Duty Harden Pucklock Hasp



778H-210G



778H-210



778H-200

## Switch Locks

### 7230 Series: Tubular Key Switch Locks

- Triple plated alloy housing.
- NAMA Standard 3/4" diameter with one or two flats.
- Available keyed alike or keyed different.
- Contact rating: 4 A @ 125 VAC or 2 A @ 250 VAC
- Contact resistance: 10 mΩ max.
- Insulation resistance: 500 MΩ min.
- Dielectric strength: 1500 VAC, 1 minute

7239 = 4 Prong End

7235 = Screw End

7234 = Spade End

7232 = Prong End



10 = OFF-ON Constant key retain

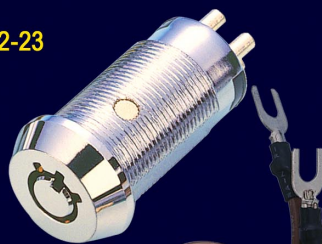
15 = OFF-ON Momentary key retain

23 = OFF-ON Constant 2 opening

(7239 only) 31 = OnA-OFF-OnB Constant 3 opening



7232-23



7239-31



7232-23W



7235-23



7234-15

### 5230 Series: Dimple Key Switch Locks

- Triple plated alloy housing.
- NAMA Standard 3/4" diameter with two flats.
- Contact rating: 4 A @ 125 VAC or 2 A @ 250 VAC
- Contact resistance: 10 mΩ max.
- Insulation resistance: 500 MΩ min.
- Dielectric strength: 1500 VAC, 1 minute



5234-15



5100-B

## 5000 Series

**baton®**  
800-395-8880

### Dimple Key System Key Profiles

- Baton's 5000 series is available with a number of key profiles which provide different levels of security.
- There are three types of keyways available:
  - Commercial keyways:  
These standard key profiles are supplied without restriction. Key duplication may be obtained on a locksmith level.
  - Restricted keyways:  
These special key profiles are available when special key security is required. Key duplication can be obtained by special order from our factory or authorized centers only.
  - Reserved keyways:  
There are some key profiles that have been reserved for unique applications. Quantity order may apply.
- Locks can be keyed alike, keyed different, or master keyed.



5000-L7



5000-LT7



5100



5000-M5



5500 Series featuring optional  
5 changeable where lock  
can change code up to  
5 time before factory rekey.



## 5600 Series: Maxi-Security Dimple Key System

- These maxi-security dimple lock featured with a hardened steel drill-proof cover.
- With TWO 90° cross rows 9 pin tumbler brass cylinder system to combate picking and key duplication.
- Right-turn 90° rotation / 180° rotation available.
- Available keyed alike, keyed different, or master keyed.
- Key can be removed on locked position only.

Optional



5600 Series featuring optional 5 changeable where lock can change code up to 5 time before factory rekey.



**5685/87/89**



**5644**



**5085/87/89**



**5044**



**5185**

## 5000 Series: versatile Plug Lock & Cam Locks

- Features one row 6 pin tumbler brass cylinder system.
- The lock is supplied with a right turn 90° rotation. Left turn rotation can also be ordered
- Locks can be keyed alike, keyed different, or master keyed either to your existing code or your new code.
- Key can be removed on both locked and unlocked positions.

## 5100 Series: Standard Plug Lock & Cam Locks

- Features 10 pin tumbler brass cylinder system.
- The lock is supplied with a right turn 90° rotation.
- Locks can be keyed alike or keyed different.
- Key can be removed on locked position only.
- compatible with 5273 switch lock. see page for detail.

## 5000 Series

**baton®**  
800-395-8880



5772

### 5772 Series Super Space Locks

- Laser welded stainless steel case and interior construction.
- Hidden case hardened steel shackle that provides tough bolt cutter and hacksaw resistance.
- 6 pins tumbler brass cylinder system
- 2 nickel silver dimple keys.



5241

### 5241 Series brass padlock

- Curve type padlock provided with solid brass lock body.
- Hardened steel shackle.
- With two row 6 or 8 pin tumbler brass cylinder.
- With 2 Nickel plated brass dimple keys.
- available in Key different only



5240

### 5141 / 5142 Series brass padlock

- Square type padlock provided with solid brass lock body.
- Hardened steel shackle.
- With one row 5 or 6 pin tumbler brass cylinder.
- 2 Nickel plated brass dimple keys.
- available in Key different only



5770

### 5770 Series Block Locks

- Solid steel body with hardened treatment, satin nickel finish.
- Features with a rotating Copper/Nickel/ Chrome triple plated case hardened steel shackle bolt.
- 2 nickel plated brass dimple keys.



5310

### 5310 Series Hotel Safe Locks

- The lock housing is made out of alloy metal with Copper/Nickel/Chrome triple finish.
- 2 rows 11 pin tumbler cylinder to combat picking
- 2 nickel plated brass dimple keys, Nickel Silver key is also available.

## 700 Series

### 761 Series: Heavy Duty Brass Padlocks

- Body is constructed from solid brass with stainless steel and brass inner mechanisms.
- Rust-proof stainless steel shackle.
- Double spring half-half loaded latch locking mechanism.
- Anti-pick 5 mushroom pin brass cylinder.
- Available keyed alike / keyed different / master keyed.
- Optional 50mm with red warning message.
- 40 and 50mm locks available with an 100mm shackle.



### 766 Series: Heavy Duty Rekeyable Brass Padlocks

- Constructed from the same materials as our 761 series.
- 6 Pins cylinder for locksmiths and service centers.
- Available in many keyways, call for availability.



### 760 Series: Solid Brass Pin Locks

- Body is constructed from solid brass with brass inner mechanisms.
- "Medeco" style 5-pin brass disc tumbler cylinder.
- Spring loaded click to lock. Available keyed alike only.
- Supplied with 2 keys per lock.
- Optional hardened-steel pin available in two sizes.
- Optional shackle guard available.



### 764 Series: Economy Brass Padlocks

- Body is constructed from solid brass with brass inner mechanisms.
- Chrome-plated steel shackle.
- Spring-loaded latch locking mechanism.
- 3 pin (20/25/30mm) 4 / 5 pin (40/45/50mm).
- Supplied with 2 nickel plated brass keys.
- Available boxed-keyed-alike (BKA)





## 700 Series

**baton®**  
800-395-8880



795-22 795-22-B

### 795 Series: Combination Cam Locks

- 3-digit combination lock with up to 1000 combinations.
- Combination can be set up in the open position.
- Available in 30mm. Fits door up to 1-1/8"
- Constructed from nickel-plated die cast alloy.



741-16/22/28/30

### 741 Series: Thumb Turn Cam Locks

- Available in 16 / 22 / 28 / 30 mm.
- Constructed from nickel-plated die cast alloy.
- Supplied with a 31mm straight cam.

742-16/22/28



### 742 Series: Coin Cam Locks

- Available in 16 / 22 / 28 mm.
- Constructed from nickel-plated die cast alloy.
- Supplied with a 31mm straight cam.



759-35

### 759-35 Series: Padlockable

- Available in 32 mm. fit door up to 1-1/8"
- Black finish die cast alloy.
- Supplied with a 31mm straight cam.



830-03CP 820-08CP

### 791 Series: Show Case Locks

- Alloy metal with Chrome Plated, Nickel Plated, Brass Plated, Satin Nickeld or Black Finished.
- Housing diameter 22.5mm threaded M22 x 1.5 with 4 flats, with effective standard length of 18mm.
- Fixing hole size 22.5mm x 20.1mm.
- For 90 degree RH or LH turn.
- With lipped/overlay standard cam W19mm x L 45mm.
- With 8 x 8mm cam hole, with end screw.



820-08-39P



K820-07-78CP K810-08-39BF



810-07CP



810-08CP



820-08CP



820-09CP



830-03CP



830-05CP



840-07CP



850-08CP



860-10CP



870-08CP

### 791 Resettable Brass Combination Padlock

- Key control resettable brass combination padlock.
- 4 10-digit wheels provide up to 10,000 possible combinations.
- Hardened steel shackle.
- Zinc alloy reset keys.
- Available in 50mm.



**791-50**

### 774 Combination Space Locks

- 70 mm Stainless Steel Combination Space lock
- Resettable brass combination padlock
- 4 10-digit wheels provide up to 10,000 possible combinations.
- Hardened steel protected shackle.



**774C-70**

### 793 Series Resettable luggage padlock

- Resettable die cast combination lock.
- 3 10-digit wheels provide up to 1000 possible combinations.



**793-03**

**793-10b**

### 789 Combination Padlock

- Stainless Steel Case.
- Hardened Steel Shackle.
- Tumbler disc automatically resets when closed.



**789-48**

### 794 Shackle Turning Resettable Combination Padlock

- Die Cast Case.
- Hardened Steel Shackle.
- 4 10-digit wheels provide up to 10,000 possible combinations.



**794-06-L**

### 795 Wall-Mount Key Lock Box

- Controls access at construction sites or rental properties.  
Mount to wall, post or fence.
- Metal body holds up to 15 keys.
- 4-digit resettable combination dial. Sliding cover.
- Measurements: Exterior dimensions: 4-3/4 in. (12 cm.) height, 3-1/4 in. (8.3 cm.) width, 1-1/2 in. (3.8 cm.) depth; Interior dimensions: 3-1/4 in. (8.3 cm.) height, 2-1/4 in. (5.7 cm.) width, 1 in. (2.5 cm.) depth



**795-90D**

## 700 Series

**baton®**  
800-395-8880



740/746/747



730



709



711-10



708



791

### 740 Series: Economy Cam Locks

- Constructed from die cast alloy with a stainless steel cap.
- 6-pin brass disc tumbler cylinder.
- Key removable only in locked position with a 90° rotation.
- Optional 180° governor, with key removable in both positions.
- Available keyed alike or keyed different. 2 keys per lock.



740-Nama Standard



746-Screw Back



747-8x8 Square

### 730 Flat Key Switch Locks

- Triple plated alloy housing. 3/4" diameter with one flats.
- Contact rating: 4 A @ 125 VAC or 2 A @ 250 VAC
- Contact resistance: 10 mΩ max.
- Insulation resistance: 500 MΩ min.
- Dielectric strength: 1500 VAC, 1 minute

### 709 Series Push Locks For Sliding Door

- These Locks are made from Zinc alloy with chrome plating.
- 4 brass disc tumbler cylinder protection.
- Key is removable in both locked and unlocked positions.
- Complete with two nickel plated brass keys.
- Can be ordered with keyed different or keyed alike.

### 711 Clip Fixing Mail Box Locks

- Made from zinc alloy with chrome or gold plating.
- Can be used in apartment condominiums.
- Stainless steel cap disc tumbler cylinder with plastic dust cover.
- Two way snap-in clip for 0.8mm and 1.2mm thick mail boxes.
- 180 degree rotation. Key is removable in both locked and unlocked positions.

### 708 Disc Tumbler Drawer Locks

- Made from zinc alloy with chrome plating.
- Featuring a 5 brass disc tumbler cylinder protection.
- Available keyed different or keyed alike.
- Complete with 2 brass keys.



## 700 Series

### 773 Series: Standard Space Locks

- Laser-welded stainless steel case and interior construction
- Triple plated case hardened steel shackle.
- Brass cylinder with 4 / 5 / 6 mushroom pin tumblers.
- Key removable in the locked position only.
- Available keyed alike /keyed different / master key.
- Optional colored body (BKA) or locks dust cover (CKD)
- Available in high security key. See pages 7/10/11



773-070



773V-070

### 770 Series: Solid Brass Block Locks

- Body is constructed from solid brass
- Triple plated case hardened steel locking bolt.
- Spring-loaded ball bearing locking mechanism.
- Anti-pick brass mushroom pin tumblers.
- Keyed alike 1 key per lock. Keyed different 2 keys per lock.
- Available in high security key and Steel Jacket. See page 5/18.



773-070-B, -G, -Y, -R

### 778 Series: Hardened Steel Pucklocks

- Body is constructed from hardened steel.
- Specialized shackleless design provides tough bolt cutter and hacksaw resistance.
- 6 mushroom pin brass tumbler cylinder.
- Supplied with 2 keys per lock.
- Available keyed alike or keyed different.
- Available in high security key and optional drill resistant bump. See ordering guide on page 28.



770-275

770-200



778-70

## 700 Series

**baton®**  
800-395-8880



## 780 Series: Laminated Steel Padlocks

- Constructed of galvanized steel plates with 8 rivets.
- Triple plated hardened steel shackle.
- Double ball bearing locking mechanism.
- “Master” style 4-pin keyway (786) or a “Yale” style 5-pin mushroom pin keyway (787).
- Available keyed alike or keyed different.
- Supplied with 1 key Keyed alike / 2 keys Keyed different per lock.

## 786FD/FK Series: Weatherproof Padlocks

- Copper/nickel/chrome triple-plated case hardened steel shackle. FK series features a 2” extended shackle.
- Long body and shackle are encased in PVC and key cover for protection from humid and sandy climates.
- Double ball bearing locking mechanism.
- Supplied with 2 nickel-plated brass keys per lock.
- Available boxed (keyed alike) or carded (keyed different)

## 768 Series: Magnetic Padlocks

- Body is constructed from chrome plated die cast alloy.
- Chrome-plated steel shackle.
- 4 magnetic steel tumblers.
- Supplied with 2 magnetic keys.
- Available in 2 sizes

## 781 Series: ZiMag Re-keyable Padlocks

- Body is constructed from zinc alloy.
- Specialized body for easy rekeying.
- 5 mushroom pin brass tumbler cylinder.
- Supplied with 2 keys per lock.
- Available keyed alike or keyed different.
- Available in 40mm or 50mm sizing
- Colors:



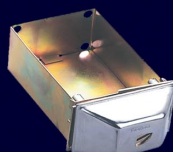
## 600 Series

### 600 Series: Coin Vaults

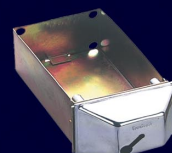
- The universal coin vaults are available assembled with your choice of lock.
- 600 Series: Designed to be used with Baton's 6086, 6087, 7085, 7087, 740-22, or any other manufacturers' locks with a center positioned keyway.
- 610 Series: Designed to be used with "Medeco" high security cam locks or any other off-center position keyway locks.
- 620 Series: Designed to protect a tubular key lock from conventional lock picks.



600



610

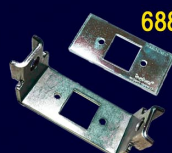


620



### 688 Series: T-Handles

- Handle covers are comprised of die-cast alloy and have a chrome-plated stipple finish for scratch resistance.
- Meets NAMA standards.
- Accepts standard and long plug locks which meet NAMA specifications.
- Optional T-handle shackle guard (stock#: 688-SG) enables padlock and pucklock use for enhanced protection.
- Optional T-Handle shackle Guard (stock #: 688-SG) enable padlock and pucklock for enhance protection.
- 688-Sxxx: Standard screw type, with a 1/2" W13 threaded stud. 3.5 x 1.5 x 2.5"
- 688-T64: Standard cam type. 3.5 x 1.5 x 2.5"
- 688-T31: Hook cam type, designed for limited space usage. A 3/32" thick plastic spacer is supplied.



688-P



688-SG

688-T31



688-S115



688-S170



## 600 Series

**baton®**  
800-395-8880



693-L25-B

### 693 Series: Security Hasps

- Constructed from 1/4" thick plated hardened steel.
- Back plates and mounting hardware included.



693-L25

### 694 Series: Shackle Guards

- Constructed from heavy gauge plated hardened steel for tough bolt cutter and hacksaw resistance.
- Available in four models.



693-L40

### 695 Series: Game Hasps

- Constructed from 5mm thick heavy duty steel with a black finish.
- Provides excellent protection against machine break-ins.
- Interior bracket guards against pulling the lock out of the game cabinet.
- Fits Baton's 7085-44 screw lock or any other 360° turn cam lock of 3/4" diameter with 2 flat sides.
- Available in two models.



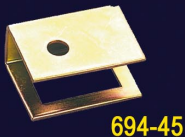
694-21

694-28



694-38

694-35



694-45

### 778H Series: Shackleless Padlock Hasps

- Constructed from hardened steel for maximum protection.
- Choose from downward opening (200), or sideway opening (210).
- Also available with optional drill guard for sideways opening. (210G)
- Fits Baton's 7273 shackleless padlock series.
- Bolts and accessories provided for easy installation.



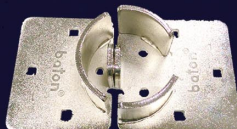
695-F00



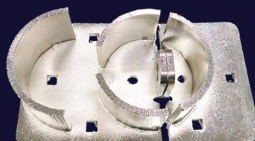
695-B00



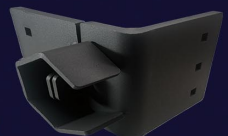
778H-HASPS-200



778H-HASPS-210



778H-HASPS-210G



778H-290

## 695/697 Series: Bar Hasps & Security Game Bars

- Constructed from heavy duty steel with a black finish. Complete with hardware.
- Bar Hasps: Accommodates any size padlock, block lock, or pin lock with a shackle diameter of 9/16" or less.
- Security Game Bars: Designed to protect cash doors.



## 691 Series: Security Collars & Washers

- Security Collars: Reduces cam lock projection. Gives extra protection from prying on exposed lock shoulder.

**691-25**



Security collar; hardened steel  
dia out: 19/16" dia in: 3/4"  
projection: 1/16" height: 1/4"

**691-28**



Security collar; hardened steel  
dia out: 1-3/8" dia in: 3/4"  
projection: 1/16" height: 5/16"

**691-29**



Security collar; hardened steel  
dia out: 1-3/8" dia in: 3/4"  
projection: 3/16" height: 7/16"

**691-20**



Anchor plate  
2-1/4 x 1 x 1/32"

- Washers: For various mounting applications.

**691-21**



Spur washer, plated steel  
dia out: 9/8" dia in: 3/4"  
projection: 3/64" height: 3/64"

**691-22**



Flat washer, plated steel  
dia out: 17/16" dia in: 3/4"  
projection: 3/64" height: 3/64"

**691-24**



Tension washer, spring steel  
dia out: 7/8" dia in: 3/4"  
projection: 1/64" height: 1/8"

**691-04**



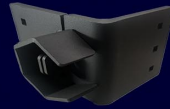
Spacer ring, plated steel  
dia out: 7/8" dia in: 3/4"  
projection: 5/32" height: 5/32"

# Pucklock Ordering Guide

**baton®**  
800-395-8880

Our Exclusive design  
offsets unwanted  
entry and drilling  
for maximum  
protection!

Choose HSAP



778H-290



778H-200



778H-210G



778H-210

778H  
8273  
7G73  
6273

M=Master Key  
D=Key Different  
A=Key Alike  
N=No Key

B

S=STANDARD 6000 MAXI SECURITY KEY  
R=RESTRICTED 6000 MAXI SECURITY KEY  
D=REVERSIBLE RESTRICTED MAXI SECURITY KEY  
U=UCHANG 8 SERIES  
G=7G TUBULAR  
8=8000 TUBULAR



T B F D=DEAD LATCH

S R S A=AUTO LATCH (Only Available in TALL)

HIGHT

TOP

BOTTOM

NEW B SERIES



S=STANDARD



B=BUMP (43mm)



F=FLAT



T=TALL (57mm)

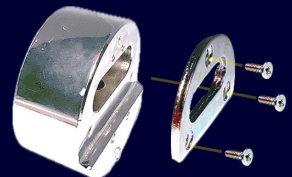


R=REGULAR (38mm)



S=STEP

B series offer exclusive  
feature allowing you to  
have BOTH flat and step  
function and bump for  
maximum security and  
flexibility

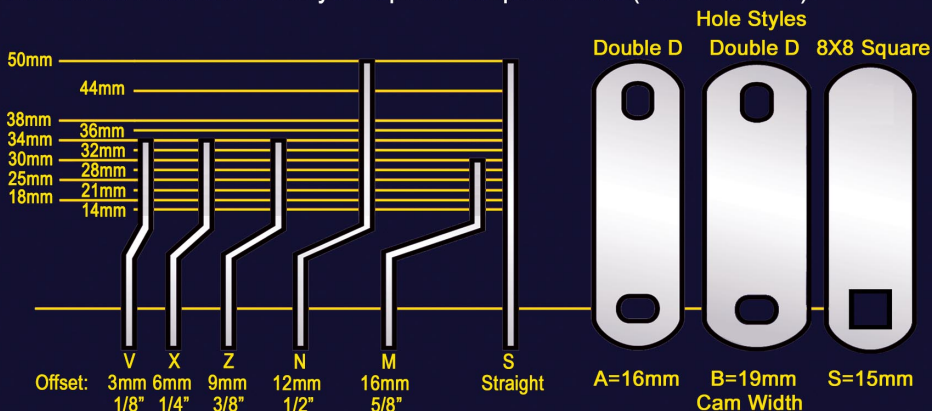


6275AN45 / 6275AN57



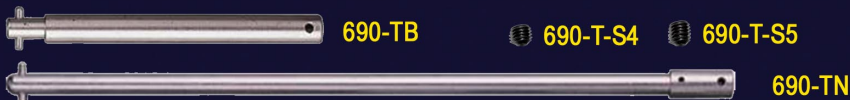
## 690 Series: Cams and Extension

- We provide a wide range of straight, cranked, and special purpose cams.
- The standard range of cams in stock is illustrated below. We can also manufacture cams to meet your specific requirements (call for details).



To order cams, please specify the letter for the cam style, followed by the letter for the cam width. and finally the effective length in mm (measured from hold to end). Ex: 690-MB34 [M - style; B - width; 34 - effective length]

### Special Cam



690-TS series is  
plated steel screw stud  
for everyday indoor use

690-TSS series is stainless  
steel screw studs for the  
ultimate weather and protection

690-TC series  
plated Steel coupler  
for 5/16" M18 post

We customize cams and accessories to your specific and unique needs

Full Customized level 4 Grand Master system can tailor to your individual needs

## Master Key

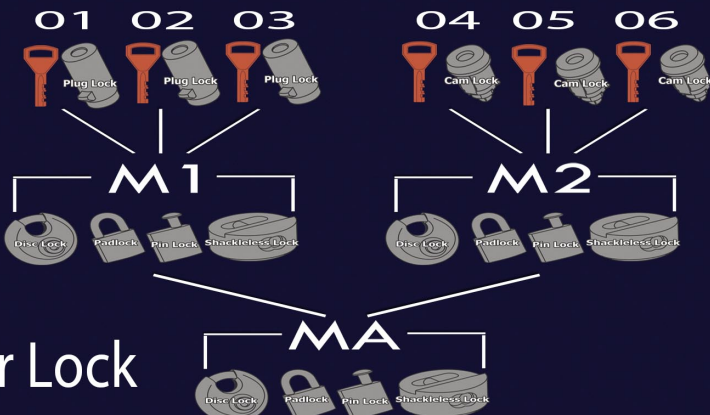


Grand Master key (MA) opens all locks in system

Sub Master key (M1) opens 01/02/03 locks (option also open 05/06)

Sub Master key (M3) opens 06/07/08 locks (option also open 05/06)

Sub Master key (M2) opens 05/06



## Master Lock

Grand Master key (MA) opens all locks in system

Sub Master key (M1) opens 01/02/03 locks

Sub Master key (M2) opens 04/05/06 locks

## Terms

Our prices are based on FOB Garden Grove. Net 10 or net 30 days can be arranged upon approval for an open account, other accounts will be prepaid Credit Card or check. Past due accounts are subject to a monthly finance charge of 1.5% until payment is received. No further orders will be processed until the account is brought back to the current balance. Service charges will apply to returned checks.

## Freight Policy

Unless specified by the customer (at additional charge), all orders are shipped by the courier and route of our choice, generally UPS Ground. Claims for loss or damage in transit should be made by your company against the courier. All goods are shipped at the customer's risk; our responsibility ceases upon delivery in good order to the courier.

## Receipt and Returned Merchandise Policy

Any discrepancy regarding the shipment must be claimed within 5 days after the merchandise has been received. Any returned item must be received within 30 days of the invoice date. An RMA number must be obtained from our Customer Service department prior to the merchandise being returned. The returned goods must be in original packaging and in a sellable condition. There will be a 25% restocking charge and a freight charge on merchandise returned or refused for reasons other than a defect or incorrect shipment. No special/custom order items can be returned, other than a factory defect.

## Orders and Cancellations Policy

Cancellations will not be processed without written confirmation from the customer. Any order shipped before the written request of a cancellation or change to the order will incur handling and restocking charges as stated above. Special orders may not be cancelled after a period of three days from the date of the order. Partial order contracts may be accepted from the customer and paid for according to the contract prices and terms. By placing an order with Baton, you agree to the terms outlined in this document. Baton is not responsible for any loss or damage due to delays, or extended delivery dates of goods.

## Limited Warranty

Unless otherwise stated within the catalog, Baton warrants that its products will be free from defects in materials and workmanship (excluding oxidation or discoloration) for a period of one year from the date of purchase. Our only obligation will be to replace the defective product(s) or parts upon inspection, together with proof of purchase dated within the warranty period.

We assume no liability for any labor charges regarding the removal or reinstallation of the products, nor will we cover any freight, postage or handling expenses regarding the product. Damage caused by accident, misuse, abuse, or improper installation are not covered by this warranty. Except as expressly stated herein, there is no warranty, whether expressed or implied, provided by Baton. No other person has authority to assume any obligation or liability in addition to this warranty.



# baton®

1-800-395-8880

Your **baton** to Security

*Celebrating Over 50 Years  
of Unmatched Security  
and Service Worldwide!*

## Save money not Security !

Save up to 60% compared to other company's compatible products. Don't delay in this TOUGH economic time. We can **SAVE YOU MONEY** no matter who you bought from while enhancing your security. *Bring your keys and we will match it!*

**High security keys  
with exclusive codes  
register to your account**

*bridge your  
system for  
1 key fits all  
to save you  
time*

*hardened steel  
spinner disk  
prevents  
drilling  
and rust*

**2.2 Million Inventory  
factory direct for  
fastest service  
in the industry**

**Service center  
throughout the world  
to Customize for your needs**

Camlock



Pluglock



Padlock



6000



7000



5000



Disk lock



Pin Lock



700



bulk vending



5 Change



Block lock



Pucklock



Bar Hasps



T-Handles



Coin Vaults



**Expand Your Reach and Get Rewarded For It!! Agent and Distributor are Welcome**

**14275 Commerce Drive Garden Grove CA 92843 714-265-3626 INFO@batonlockusa.com**